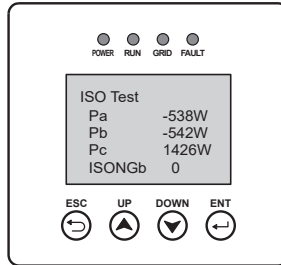
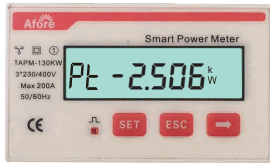
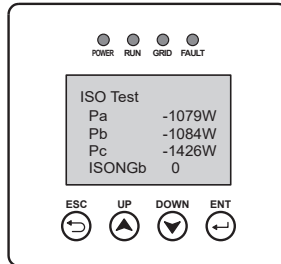
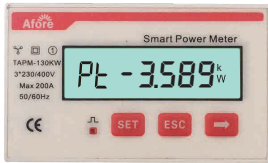


b. If the smart meter's pin wiring order is incorrect , the Smart Meter and the inverter Pac will be wrong display.

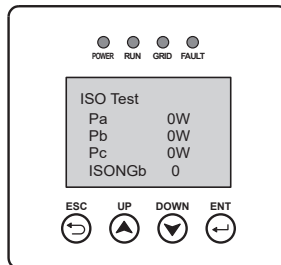
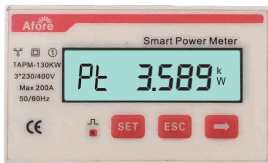


c. If the CT install direction is incorrect, the power on the smart meter and the inverter will display negative values.

d. If the CT wiring order is incorrect with smart meter, the power on the smart meter and the inverter will display negative values.









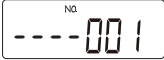






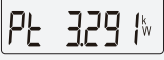
e. If the PQD function is not activated, COM 2 not setting or communication cable is not well connected, the power displayed on the inverter is Pac=0W.



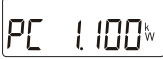
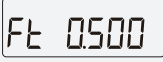

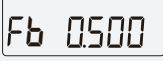
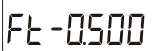


Note:

Do not connect the CT with port 10 of the meter, otherwise will lead short-circuit.

9. Explanation of Smart Meter Display Content

NUM	Display interface	Note
1		Total Active energy
2		Positive active energy
3		Reverse active energy
4		Communication Protocol
5		
6		Baud Rate
7		Communication address
8		Phase A Voltage
9		Phase B Voltage
10		Phase C Voltage
11		Phase A Current
12		Phase B Current
13		Phase C Current
14		Total power

NUM	Display interface	Note
15		Phase A Power
16		Phase B Power
17		Phase C Power
18		Power Factor
19		Phase A Power Factor
20		Phase B Power Factor
21		Phase C Power Factor

10. Trouble Shooting

Fault	Reason	Solution
No display	<ul style="list-style-type: none"> · Wiring error · Supply voltage error 	<ul style="list-style-type: none"> · Please check the wiring · Please check the power supply voltage
Communication failure	<ul style="list-style-type: none"> · Communication line connection error · Communication cable failure · Zero Injection function not activate 	<ul style="list-style-type: none"> · Please reconnect the communication cable · Please replace the communication cable · Activate the zero injection function of the inverter and restart the inverter
Meter shows negative value	<ul style="list-style-type: none"> · Current transformer is not placed in the right direction · The smart meter is incorrect wiring 	<ul style="list-style-type: none"> · Please check the direction of the CT · Please reconnect the meter
The great discrepancy between the measured value and the actual value	<ul style="list-style-type: none"> · Wiring error · Voltage and current phase shifts are not the same 	<ul style="list-style-type: none"> · Please check the wiring · Please check the meter wiring